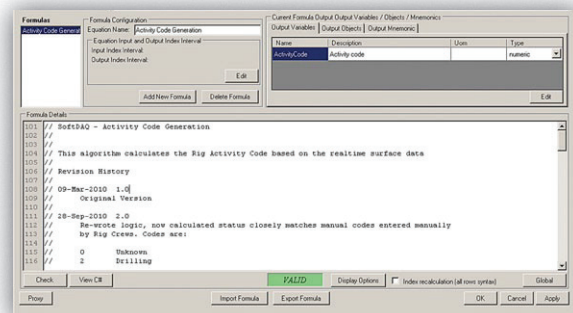




# Calculation Engine

- Fully Programmable Algorithmic Calculation
- High Level Language
- Predefined Mathematical Library
- Tool Response
- Pre-Programmed Library
- Project Wizard & Advanced Mode



## INCLUDED PRE-PROGRAMMED LIBRARIES

### Drilling Optimization

- MSE
- ECD
- Operational status
- Vibration analysis

### Safety

- Pressure differential
- Over pressure
- Kick / lost circulation

### Geosteering

- Automatic formation dip calculation
- Variable depth of investigation
- Image contrast enhancement

### Geophysical Analysis

- True rock porosity and water saturation
- Identification of water breakthrough in production fields
- Lithology identification from gas ratios

## About PetroDAQ

PetroDAQ, Inc. is a technology provider for the oil and gas industry, with emphasis in data acquisition and aggregation solutions.

Established in 2010, PetroDAQ has rapidly risen in the market as a reliable provider of customized data acquisition solutions.

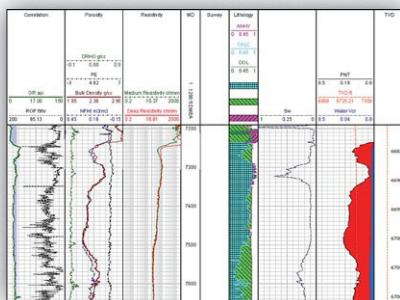
Our customers include national oil companies, rig owners, mudlogging, BOP testing, and data management companies. Each solution is tailored to the specific needs of the customer.

PetroDAQ's goal is to provide end-to-end solutions that deliver sensor data to the final user in real time, overcoming the usual interoperability issues that arise when multiple vendors are involved in the operations.

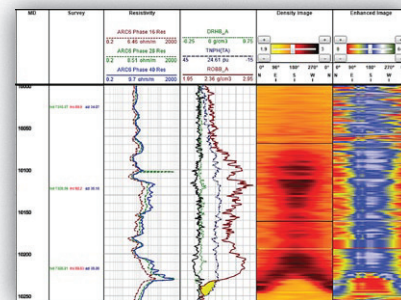
Our product lines include analog data acquisition, digital data aggregation, specialized sensors, and packaging of end-to-end solutions.

PetroDAQ promotes the use of standard protocols for the exchange of information between vendors. PetroDAQ is a full member of the standards organization Energistics.

Litho - Track



Geosteering Images



# PetroDAQ



Universal Data Acquisition



All PetroDAQ Solutions are



www.PetroDAQ.com

sales@PetroDAQ.com

+1 281 826 1825